

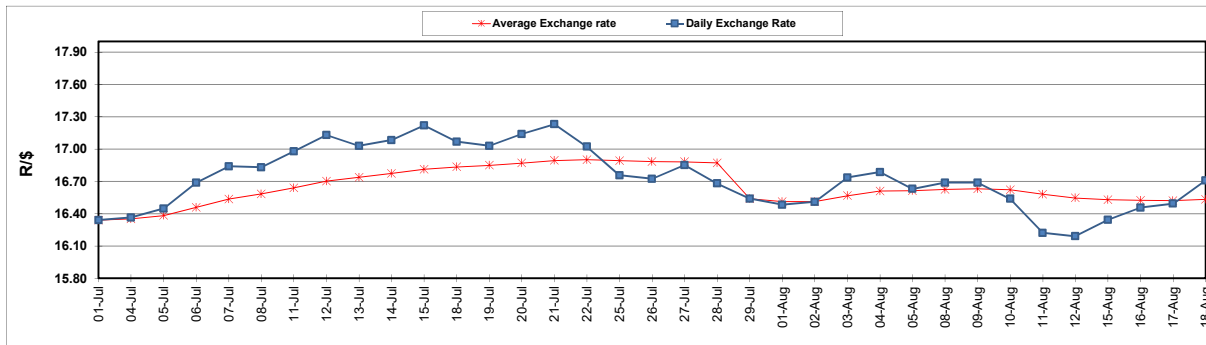
	PETROL 95 ULP	PETROL 93 ULP & LRP	DIESEL 0.05%	DIESEL 0.005%	ILL. PAR.
GAUTENG PUMP PRICE (SA c/l) AS FROM 03/08/2022	2,542.000	2,499.000	-	-	-
WHOLESALE PRICE (SA c/l) AS FROM 03/08/2022	-	-	2,452.440	2,461.840	1,842.288
SINGLE NATIONAL MAXIMUM RETAIL PRICE	-	-	-	-	2,431.000
BASIC FUEL PRICE - 18/08/2022 (SA c/l)	1,298.053	1,267.933	1,570.101	1,594.925	1,572.143
PRESS RELEASE CONTRIBUTION TO BFP 03/08/2022 - 18/08/2022 (SA c/l)	1,482.410	1,439.410	1,600.630	1,610.030	1,624.128
UNIT OVER/(UNDER) RECOVERY - 18/08/2022 (SA c/l)	184.357	171.477	30.529	15.105	51.985
AVERAGE BASIC FUEL PRICE 29/07/2022 - 18/08/2022	1,274.094	1,246.824	1,436.604	1,454.356	1,481.360
AVERAGE UNIT OVER/(UNDER) RECOVERY 29/07/2022 - 18/08/2022	249.716	233.986	196.626	188.874	171.568

ANALYSIS MOVEMENT OF AVERAGE OVER/(UNDER) RECOVERY

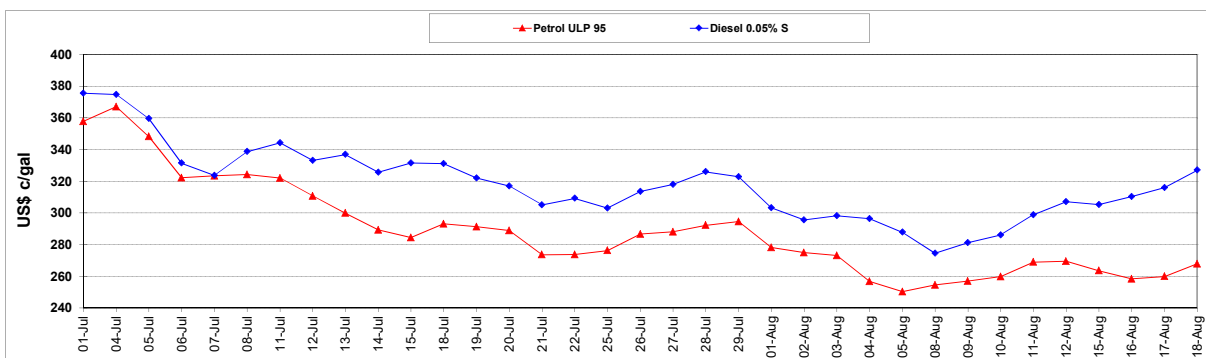
	PETROL 95	PETROL 93	DIESEL 0.05%	DIESEL 0.005%	ILL. PAR.
- MOVEMENT IN INTERNATIONAL PRODUCT PRICES	223.654	208.482	167.240	159.125	141.266
- MOVEMENT IN EXCHANGE RATE	26.062	25.504	29.386	29.749	30.302
AVERAGE UNIT OVER/(UNDER) RECOVERY 29/07/2022 - 18/08/2022	249.716	233.986	196.626	188.874	171.568

R/\$ EXCHANGE RATE - (R/\$16.7085 - 18/08/2022)

EXCHANGE RATE USED IN BASIC FUEL PRICE



INTERNATIONAL PRODUCT PRICES OF BASKET USED IN BASIC FUEL PRICE



BASIC FUEL PRICE IN SA CENTS PER LITRE

